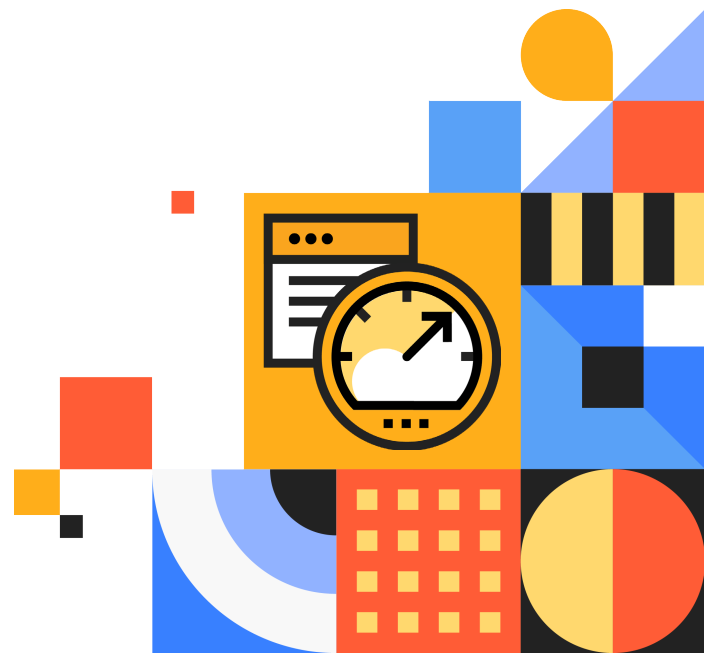


Implementation Service: Continuous Delivery for Puppet Enterprise

Continuous Delivery for Puppet Enterprise enhances Puppet Enterprise by providing a CI/CD code deployment workflow for your Puppet code. This Professional Services offering centered around Continuous Delivery for Puppet Enterprise provides an entry point for customers interested in building a high-velocity Puppet code deployment workflow into their Puppet Enterprise infrastructure.

Recommended For

Customers who wish to add Continuous Delivery for Puppet Enterprise to their existing Puppet Enterprise implementation.



Benefits

A Continuous Delivery for Puppet Enterprise Services engagement enables you to recognize maximum value from your installation. Continuous Delivery for Puppet Enterprise offers prescriptive, customizable workflows and intuitive tools for Puppet code testing, deployment, and impact analysis. These features, among others, can help you deploy Puppet code enhancements and fixes into your infrastructure with speed and confidence.

Deliverables

This service offering includes the following deliverables:

- Assistance with installation and configuration of Continuous Delivery for Puppet Enterprise
- A functioning Continuous Delivery for Puppet Enterprise installation with a code deployment pipeline configured to push changes out as configured by the Customer
- Knowledge transfer to the Customer detailing how Continuous Delivery for Puppet Enterprise fits into their current DevOps journey and enables them to release Puppet code changes more reliably and at a faster pace

Puppet is driving the movement to a world of unconstrained software change. Its revolutionary platform is the industry standard for automating the delivery and operation of the software that powers everything around us. More than 40,000 companies — including 75 percent of the Fortune 100 — use Puppet's open source and commercial solutions to adopt DevOps practices, achieve situational awareness and drive software change with confidence. Headquartered in Portland, Oregon, Puppet is a privately held company with more than 500 employees around the world. **Learn more at puppet.com.**

